



Malorey House

Les Charrieres Malorey
St. Lawrence
Jersey
JE3 1FU

£4,950,000

FC005

FREEHOLD - Malorey House is a stunning seven-bedroom country retreat that seamlessly blends luxury with comfort. From its secluded entrance to its spacious interiors, every detail is meticulously crafted to create a warm and inviting family atmosphere. The unique tourelle entrance and grand curved stairwell add distinctive character to this exquisite home.

The kitchen, equipped with modern fittings and an alfresco dining option, is perfect for both casual family meals and entertaining guests. The additional formal dining room ensures ample space for larger gatherings.

Upstairs, the principal suite captivates with its balcony offering breathtaking countryside views. The luxurious feel is enhanced by the ensuite bathroom and walk-in dressing room. The other four bedrooms are spacious, beautifully appointed, and offer serene vistas.

Outside, the garden is a true paradise, featuring lush greenery and a large alfresco bar and kitchen under a pergola. This inviting space is ideal for family gatherings and outdoor enjoyment. The fabulous pool, seamlessly integrated into the landscape, adds to the ambiance and provides a refreshing escape on warm days.

These outdoor amenities are strategically located away from the main house, allowing for a lively atmosphere without disturbing the indoor tranquility. It's the perfect setup for hosting parties, barbecues, or simply relaxing with friends and family.

With its combination of an outdoor kitchen, bar, pool, and ample space for socializing, Malorey House is a haven for creating cherished memories and enjoying outdoor living to the fullest.

The property also offers an adjoining agricultural field, currently used for equine grazing, extensive parking and a garage for four cars, with additional bedrooms above. The separate access to these bedrooms is a thoughtful touch, providing an excellent space for guests or teenagers, combining both space and convenience.



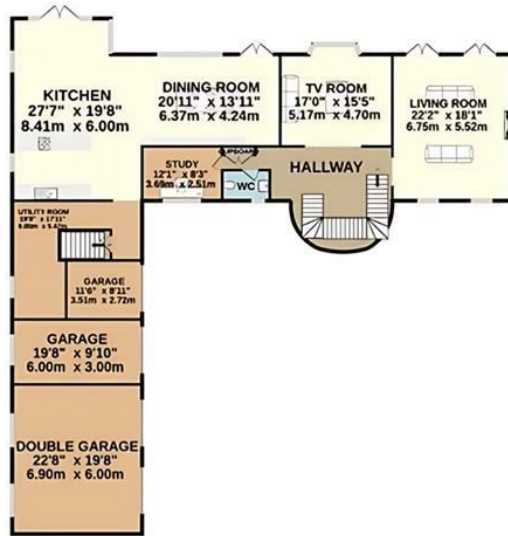




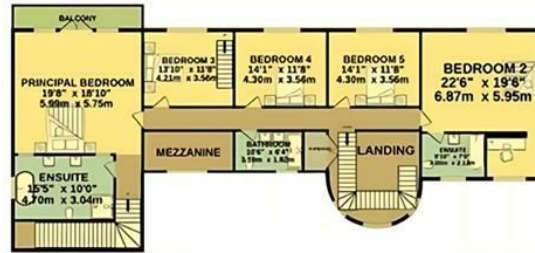




GROUND FLOOR
2856 sq ft. (265.3 sq m.) approx.



1ST FLOOR
2627 sq ft (262.6 sq m.) approx.



2ND FLOOR
289 sq ft. (26.8 sq m.) approx.



Outside

Electric gated entrance.

Large garden with pool, bar/kitchen. The pool has an electric safety cover.

Changing room and outdoor shower.

A large agricultural field with equine use adjoining the garden. An additional agricultural field nearby.

Garaging for 3-4 cars.

Services

House and pool heated by air source pumps.

Borehole water and soak away.

Plant room has filters for water including UV.

Directions

Head towards Jersey War Tunnels, take the sharp right turning onto Les Charrières Malorey. Follow the road up the hill and round the bends, and Malorey House will be on your right as the road starts to level out.

Call us on

01534 888855

jersey@fineandcountry.com

www.fineandcountry.je

5 King Street, St Helier, Jersey, JE2 4WF

Agents Note: Whilst every care has been taken to prepare these particulars, they are for guidance purposes only. All measurements are approximate and are for general guidance purposes only and whilst every care has been taken to ensure their accuracy, they should not be relied upon and potential buyers are advised to recheck the measurements.